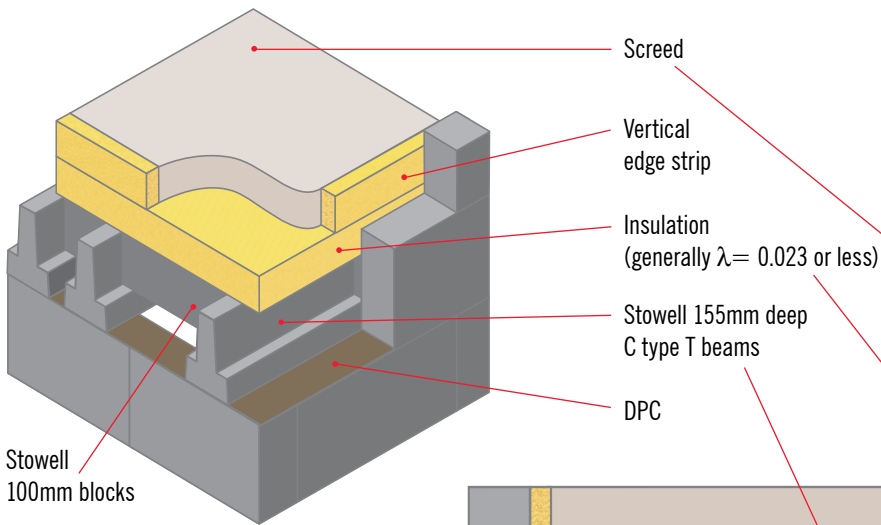
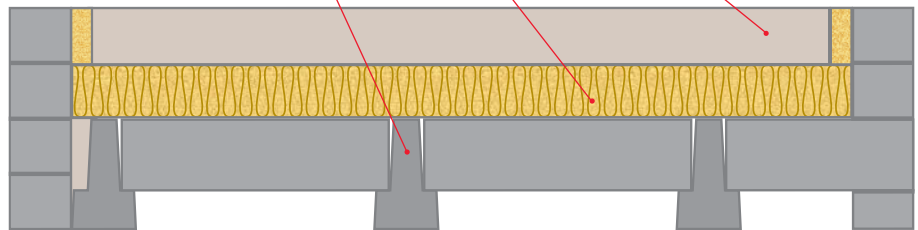


Stowell solutions for ground floors to help satisfy Part L



- T beam and block floor
- screed laid on generic insulation

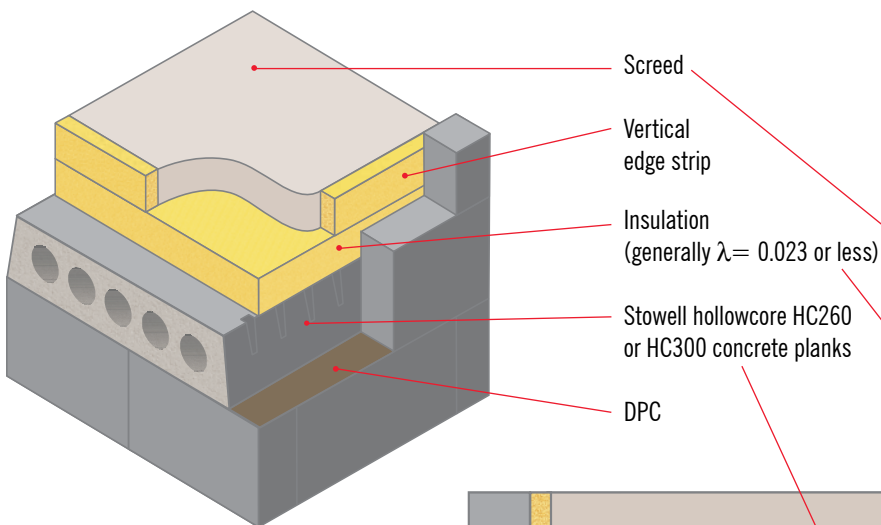


New dwellings

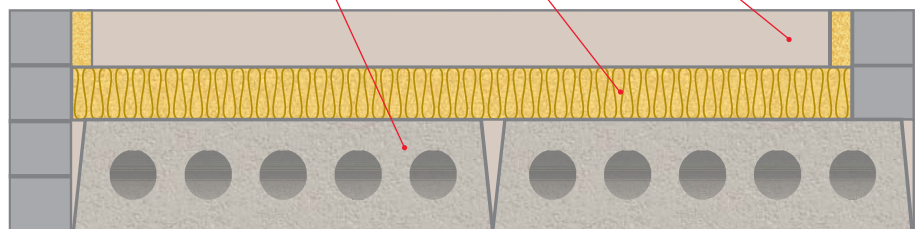
L1A: The maximum permitted U-value for floors is 0.25 W/m²K but the whole house needs to be 20% lower than notional building figures, which for floors is 0.25 W/m²K, therefore the U-value of 0.2 W/m²K will comply.

Work on existing dwellings

L1B: The maximum permitted U-value is 0.22 W/m²K for floors.



- hollowcore plank floor
- screed laid on generic insulation



STOWELL
CONCRETE LIMITED

Arnolds Way, Yatton, Bristol BS49 4QN
also at Holcombe, Cheddar & Weston-s-Mare
Tel: 01934 834000 Fax: 01934 835474
www.stowellconcrete.co.uk