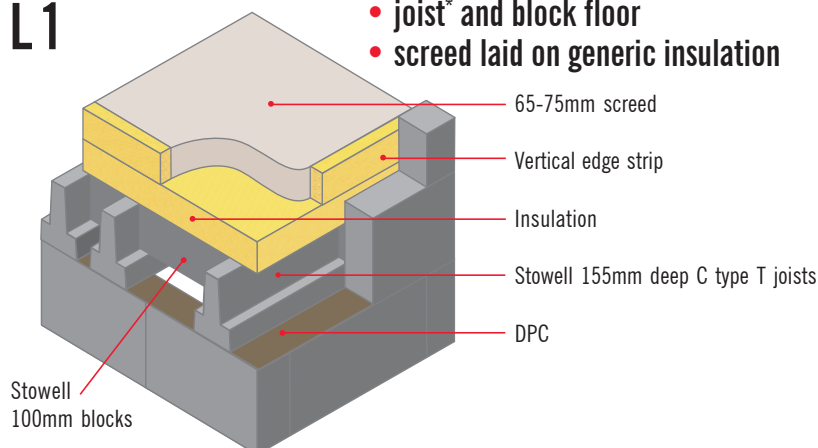


Stowell solutions for ground floors to help satisfy Part L

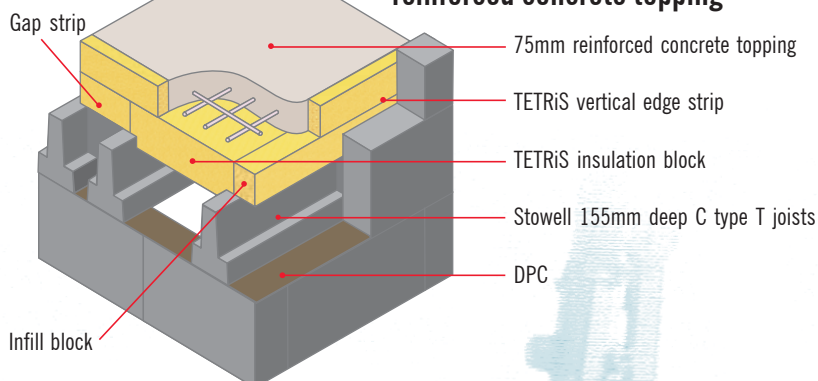
L1

- joist* and block floor
- screed laid on generic insulation



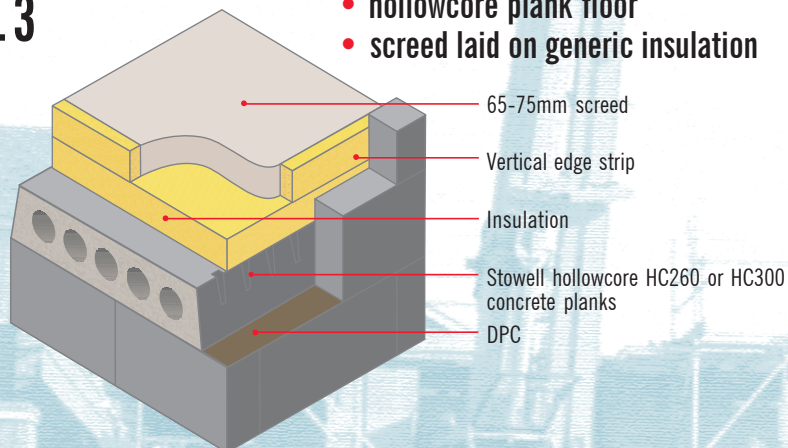
L2

- joist* & TETRIS block floor with reinforced concrete topping



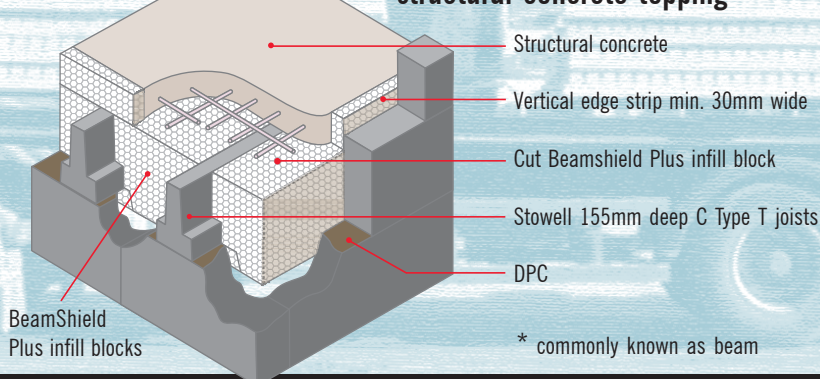
L3

- hollowcore plank floor
- screed laid on generic insulation



L4

- joist* and BeamShield Plus with structural concrete topping



* commonly known as beam

Building Regulations Part L

To underline the UK Government's commitment to reduce greenhouse gases, it has amended Approved document L (England and Wales): Conservation of Fuel and Power, and implemented the European Union's Energy Performance of Building Directive (EPBD). The changes have a significant effect on current design and construction practices. Since 1st April 2007, all new and qualifying buildings have to comply with the new legislation. For Scotland, the requirements are detailed in Section 6 – Energy, which came into force on 1st May 2005.

Objectives of Part L

ADL 2006 sets out to make buildings more energy efficient, with an aim to reduce carbon production by one million tons per year. To satisfy EPBD requirements, new buildings' energy performance standards must be 20-28% lower than the ADL 2002 notional building Target CO₂ Emission Rate (TER), based on the *whole building*.

New document structure

ADL 2006 is significantly different from previous Approved Documents, in both layout and content. The new document is split into four parts, reflecting the specialisation in the construction market...

- L1A: New dwellings
- L1B: Work on existing dwellings
- L2A: New building – other than dwellings
- L2B: Work on existing buildings – other than dwellings.

New dwellings

L1A: The maximum permitted U-value for floors is 0.25 W/m²K but the whole house needs to be 20% lower than notional building figures, which for floors is 0.25 W/m²K, therefore the U-value of 0.2 W/m²K will comply.

Work on existing dwellings

L1B: The maximum permitted U-value is 0.22 W/m²K for floors.

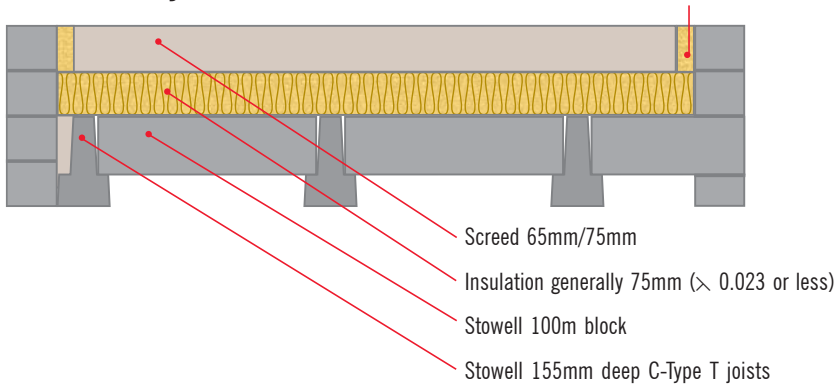
STOWELL

CONCRETE LIMITED

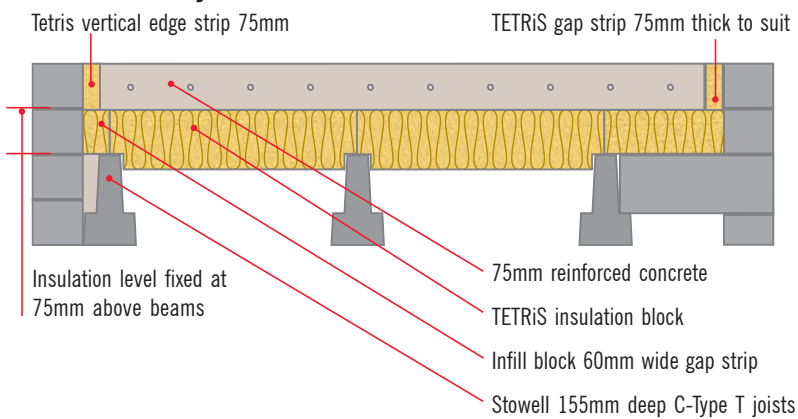
www.stowellconcrete.co.uk

Zero cold bridging solutions

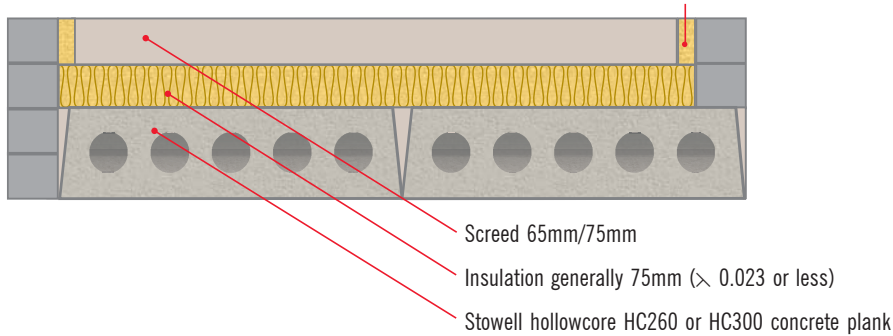
L1. Stowell joist*, block and insulation



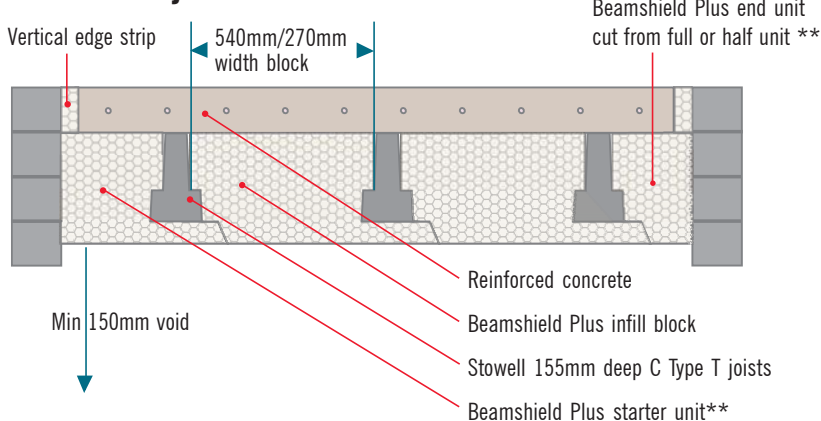
L2. Stowell joist* and TETRiS



L3. Stowell hollowcore and insulation



L4. Stowell joist* and Beamshield Plus



* commonly known as beam

** so that the structural concrete can extend max 300mm span beyond T beam

Please consult our design team on 01934 834000.

Stowell 155 T joists, Stowell blocks, insulation and screed enable builders to achieve required U-values for ground floor construction fully complying with Part L of the Building Regulations (England and Wales) 2005.

Please send your plans to our flooring department so we can calculate joist* and block layouts.

Stowell 155 T joists with TETRiS insulation blocks and reinforced concrete enable builders to achieve required U-values for ground floor construction fully complying with Part L of the Building Regulations (England and Wales) 2005.

Please send your plans to our flooring department so we can calculate joist* and block layouts and TETRiS layout.

Stowell hollowcore concrete planks, insulation and screed enable builders to achieve required U-values for ground floor construction fully complying with Part L of the Building Regulations (England and Wales) 2005.

Please send your plans to our flooring department so we can calculate hollowcore layouts.

Stowell 155 T joists, Beamshield Plus and reinforced concrete enable builders to achieve required U-values for ground floor construction fully complying with Part L of the Building Regulations (England and Wales) 2005.

Please send your plans to our flooring department so we can calculate joist* and Beamshield layouts.

STOWELL
CONCRETE LIMITED

Arnolds Way, Yatton, Bristol BS49 4QN
also at Holcombe, Cheddar & Weston-s-Mare
Tel: 01934 834000 Fax: 01934 835474
www.stowellconcrete.co.uk