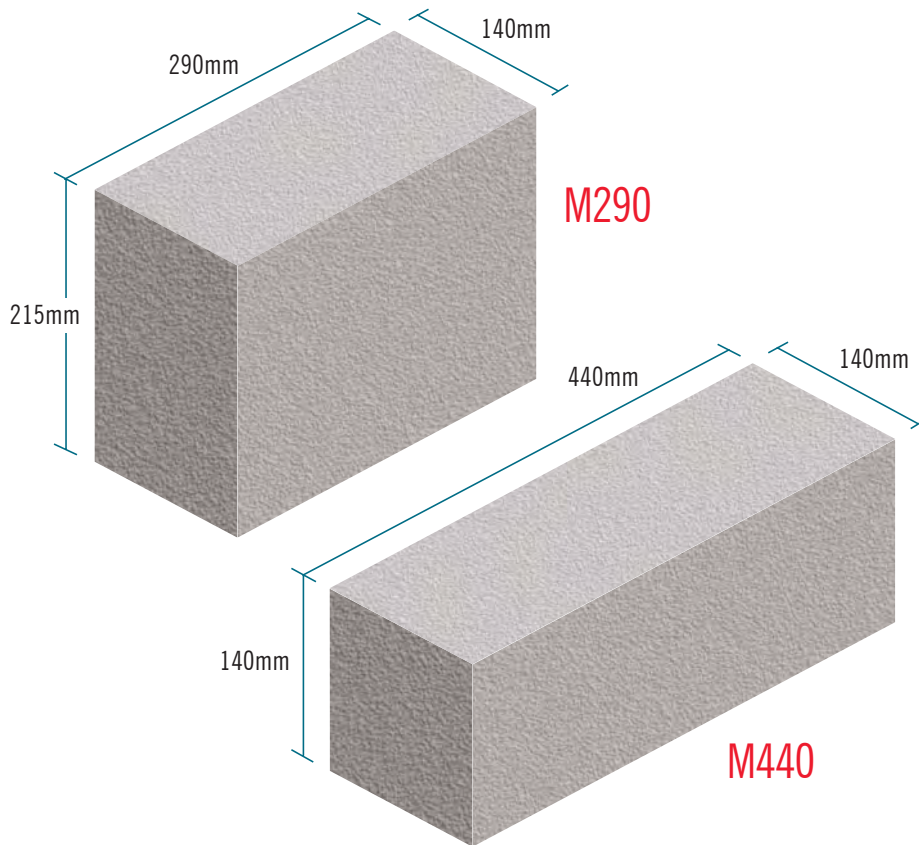


Concrete midi blocks to BS EN 771-3



To complement their range of dense concrete blocks, Stowell Concrete have introduced the midi block.

Due to the requirements of Building Regulations part E, there are circumstances where the use of a 140mm wide dense concrete block is the best solution to meet these requirements. There is also pressure to reduce the mass of individual units to below 20kg.

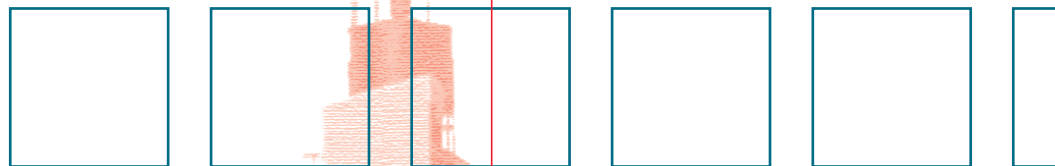
Midi blocks have been designed to satisfy both these requirements, coming in two sizes – M290 or M440.

Stowell midi blocks have a compressive strength of 7.3 N/mm² and a density of 1950kg/m³. This gives a when-built wall mass of approximately 280kg/m² using either M290 blocks or M440 blocks.

Also 10.4 N/mm² and 17 N/mm² strengths are available.

Close-textured midi blocks are also available to order (7.3 N/mm² and 10.4 N/mm²).

Size mm nominal	approx weight kg	approx density kg/m ³	number per tonne	number per pack	approx pack weight kg
M290 – 290 × 215 × 140	17	1950	59	24	408
M440 – 440 × 140 × 140	17	1950	59	48	816



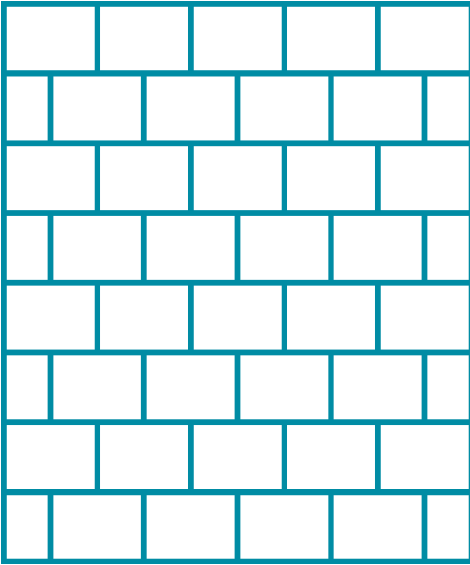
STOWELL
CONCRETE LIMITED

07/09

www.stowellconcrete.co.uk

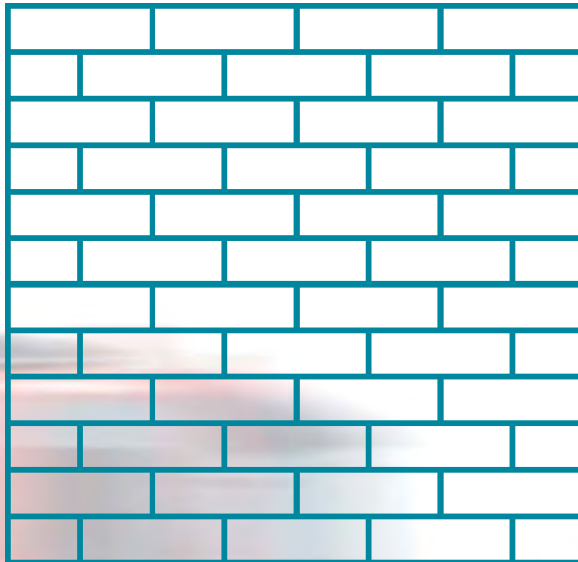
Concrete midi blocks

M290 290×215×140mm



15 No per m²

M440 440×140×140mm



15 No per m²



Stowell M290 blocks have a face size of 290×215mm – two thirds the length of a standard block – and are built with a course height of 225mm. Two courses match two courses of standard blockwork or six courses of brickwork.

Stowell M440 blocks have a face size of 440×140mm – two thirds the height of a standard block – and are built with a course height of 150mm. Three courses match two courses of standard blockwork or six courses of brickwork.

Also available are 65×215×140mm dense course adjusters which can be used with both our M290 and M440 midi blocks.

All products are available ex works.

Prices on application.

Telephone our sales office for further information and quotations.

STOWELL
CONCRETE LIMITED

Arnolds Way, Yatton, Bristol BS49 4QN
also at Holcombe, Cheddar & Weston-s-Mare
Tel: 01934 834000 Fax: 01934 835474
www.stowellconcrete.co.uk

07/09