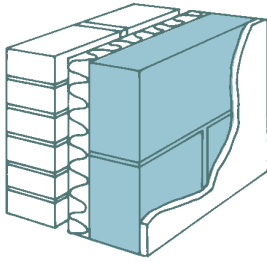


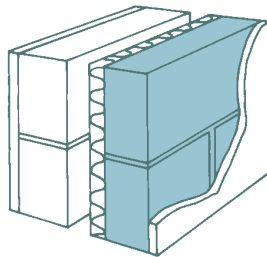
Stowlite lightweight concrete blocks to BS EN 771-3

OPTION 1 PARTIAL FILL



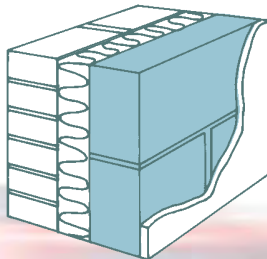
Outside resistance	0.040
105mm brick	0.136
50mm low emissivity cavity	0.644
50mm Kingspan TW50	2.174
100mm Stowlite	0.200
12.5mm drylining on Dabbs	0.230
Inside resistance	0.130
Sum of resistances	3.554 m²K/W
Uncorrected U-value	0.281 W/m ² K
Correction	0.026
U-VALUE	0.307 W/m²K

OPTION 2 PARTIAL FILL



Outside resistance	0.040
100mm block + 19mm render	0.136
50mm low emissivity cavity	0.644
50mm Kingspan Kooltherm K8	2.380
100mm Stowlite	0.200
12.5mm drylining on Dabbs	0.230
Inside resistance	0.130
Sum of resistances	3.760 m²K/W
Uncorrected U-value	0.266 W/m ² K
Correction	0.026
U-VALUE	0.292 W/m²K

OPTION 3 FULL FILL



Outside resistance	0.040
105mm brick	0.136
100mm Dritherm 32	3.125
100mm Stowlite	0.200
12.5mm drylining on Dabbs	0.230
Inside resistance	0.130
Sum of resistances	3.861 m²K/W
Uncorrected U-value	0.259 W/m ² K
Correction	0.026
U-VALUE	0.285 W/m²K

ALSO AVAILABLE: 540 × 100 × 215mm Stowlite blocks for use with Stowell flooring T joists, or for quicker block laying (+22%) when building walls. See **Concrete flooring blocks** data sheet 4.5.



The Stowlite concrete block offers the builder an alternative product midway in the range between the dense concrete block and the high performance Fibotherm block. Stowlite blocks are widely used in a number of applications where high insulation is not such a priority. Being lighter than the standard dense block, handling is easier, often making savings on foundations and labour.

OVEN DRY DENSITY approx 1450 kg/m ³			
Size mm	approx weight kg	per tonne	per cube /band
440 × 215 × 100 [†]	14.0	70	44
440 × 215 × 140 [†]	19.5	51	32
440 × 215 × 190 [†] •	27.5	36	20
Course adjusters			
65 × 215 × 100	2.0	500	128
65 × 215 × 140	2.8	360	96

[†] Also available in close textured 7.3 N/mm² [‡] To order only

• Blocks in excess of 20kg – please use with caution after assessing the risks.

MIN. COMPRESSIVE STRENGTH: 7.3 N/mm²
THERMAL CONDUCTIVITY: 0.51 W/mK*

THERMAL RESISTANCE:

SIZE mm	m ² K/W at:
440 × 215 × 100 [†]	3% m/c 0.20
440 × 215 × 140 [†]	3% m/c 0.27
440 × 215 × 190 [‡]	3% m/c 0.37

(m/c = moisture content)

SOUND INSULATION:

42 dB (A) (100 mm single skin)**
44 dB (A) (140 mm single skin)**

* Tested by BRE

** Calculated using mass law curve

All products available ex works. Prices on application. Telephone the sales office for further information and a quotation.

STOWELL

CONCRETE LIMITED

Arnolds Way, Yatton, Bristol BS49 4QN
also at Holcombe, Cheddar & Weston-s-Mare
Tel: 01934 834000 Fax: 01934 835474
www.stowellconcrete.co.uk

07/09