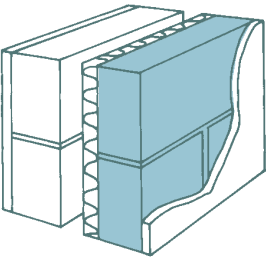


Dense concrete blocks to BS EN 771-3

Size mm	per tonne 7.3N/mm ²	per pack	7.3N	10.4N	17N	Close texture 7.3N
440 × 215 × 75	72	56	●			
440 × 215 × 90	60	48	●			
440 × 215 × 100	54	44	●	●	●	●
440 × 215 × 140	38	32	●	●	●	●
440 × 215 × 190	28	20	●	●		
Coursing bricks						
65 × 215 × 100	340	128		●		
65 × 215 × 140	240	96		●		
Coursing slips						
38 × 215 × 100	625	416	●			
38 × 215 × 140	450	312	●			

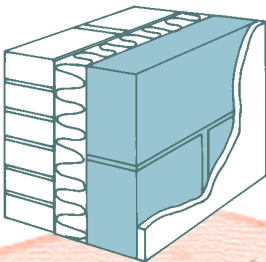
- Blocks in excess of 20kg each. Please use with caution after assessing risks, or consider using Stowlite, Fibotherm, hollow, cellular or midi blocks.

OPTION 1 PARTIAL FILL



Outside resistance	0.040
100mm block + 19mm render	0.136
50mm low emissivity cavity	0.644
50mm Kingspan Kooltherm K8	2.380
100mm dense concrete block	0.100
12.5mm drylining on Dabbs	0.230
Inside resistance	0.130
Sum of resistances	3.660 m²K/W
Uncorrected U-value	0.273 W/m ² K
Correction	0.026
U-VALUE	0.299 W/m²K

OPTION 2 FULL FILL



Outside resistance	0.040
105mm brick	0.136
100mm Dritherm 32	3.125
100mm dense concrete block	0.100
12.5mm drylining on Dabbs	0.230
Inside resistance	0.130
Sum of resistances	3.761 m²K/W
Uncorrected U-value	0.266 W/m ² K
Correction	0.026
U-VALUE	0.292 W/m²K

Stowell dense concrete blocks offer the builder a full range of solid concrete blocks with a well-established durability, low drying shrinkage and proven acoustic properties that will fulfil most applications. They are manufactured to BS EN 771-3 using Class 1 limestone aggregates.

The blocks are available in a standard face size of 440 × 215mm and in thicknesses of 75mm, 90mm, 100mm, 140mm and 190mm in a standard finish (suitable for rendering). Strengths available are 7.3 N/mm², 10.4 N/mm² and 17 N/mm². The above blocks are also manufactured in a close textured finish which is suitable for direct decoration (strengths available 7.3 N/mm², 10.4 N/mm²).

Coursing bricks and slips are also available in both 100mm and 140mm thicknesses.

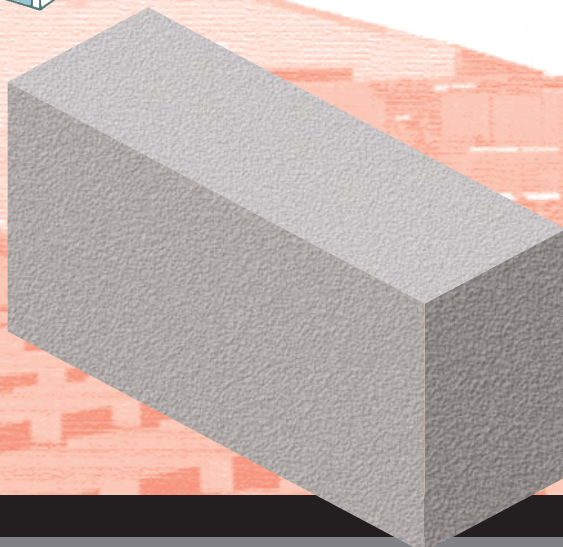
SIZE mm	approx weight kg	approx density kg/m ³
440 × 215 × 75	14	1950
440 × 215 × 90	17	1950
440 × 215 × 100	18.5	1950
440 × 215 × 140	26	1950
440 × 215 × 190	35	1950

THERMAL CONDUCTIVITY: 1.00 W/mK

THERMAL RESISTANCE

Size mm	m ² K/W at:
440 × 215 × 75	3% m/c 0.08
440 × 215 × 90	3% m/c 0.09
440 × 215 × 100	3% m/c 0.10
440 × 215 × 140	3% m/c 0.14
440 × 215 × 190	3% m/c 0.19

(m/c = moisture content)



STOWELL

CONCRETE LIMITED

07/09

www.stowellconcrete.co.uk